

Report to Community Safety Forum – 18th June 2012

Subject: Crime trends and performance in Brighton & Hove, Position up to March/April 2012

Contact Officer: Name: *Ruth Condon* Tel: 29-1103

E-mail: ruth.condon@brighton-hove.gov.uk

Wards Affected: All

1. SUMMARY AND POLICY CONTEXT:

- 1.1 This report describes recent activities and progress relating to priority areas in the [Brighton & Hove Community Safety, Crime Reduction and Drugs Strategy 2011-14](#). It also provides statistical updates relating to 2011/12, ie. April 2011 to March 2012.
- 1.2 Graphs showing monthly crime data from April 2008 to April 2012 are also provided. These set recent data in the context of both longer term trends and also seasonal crime cycles (where applicable).

2. RECOMMENDATIONS:

- (1) The Community Safety Forum notes the information provided in this report and is invited to:
 - i) Feedback on any developments from their community or organisation's experience which may help the understanding and interpretation of the data and trends contained in this report.
 - ii) Consider the potential for supporting crime reduction and community safety priorities within their own organisation or local community.

3. INFORMATION:

Total Police-recorded Crime

- 3.1 Between April 2011 and March 2012 there were a total of 23,668 police recorded crimes, 1.6% fewer than in 2010/11 but falling short of the 3% reduction target.

Neighbourhoods and Quality of Life

- 3.2 In 2011/12 there was a good reduction in police recorded criminal damage (down 6.4%) compared with 2010/11. This continues the downward trend which has been seen now over five consecutive years.
- 3.3 A programme of 'street focus days' has been planned for 2012/13 where there is a focus on city neighbourhoods where the street environment is in need of

improvement. These involve city services (eg. Cityclean and highways) and local residents working together in a co-ordinated way to make a noticeable difference. This approach generally involves cleaning up the local area, work to improve the area visually (eg. work to encourage window boxes, etc.), as well as enforcement action where required.

- 3.4 The bringing together of neighbourhood policing and council community safety teams into the Safe in the City Delivery Unit from April 2012 enables joint resources to take action where there are areas of concern in neighbourhoods and proactively plan projects.

Drugs Misuse

- 3.5 The fourth UK Recovery Foundation walk through Brighton & Hove city centre will take place on the 29th September 2012. This is intended to draw attention to the current focus on recovering from substance misuse, and has been described by the Mayor as a “public and visible...positive affirmation for participants and those watching”. In July, the 16th Annual Sussex DAATs Drug and Alcohol Conference and Exhibition, co-hosted with Drugs and Alcohol Today, will take place, and this will also have a major focus on recovery. During the first 9 months of 2011/12 there has been an improvement in the percentage those in drug treatment who leave treatment in a planned way compared with 2010/11.
- 3.6 Work continues to rollout the distribute the naloxone antidote to counteract drug overdose and administer training. Its effectiveness at preventing drug-related deaths is being monitored, but anecdotal reports have suggested that up to eight possible lives have been saved through this work so far.
- 3.7 Many repeat offenders are people who misuse drugs, and a high percentage of the crimes they commit are acquisitive crimes. In 2011/12 all acquisitive crimes (incl. theft/handling, burglary and robbery) increased by 6% compared with 2010/11. However, for serious acquisitive crimes (burglary, vehicle crime and robbery) there was a decrease of 12%, while on the other hand there continue to be substantial increases in ‘lower level’ thefts, especially in theft from person (up 58%). Thefts from the person increased very sharply in the three months ending in March 2012. This was mainly the result of criminal groups in nightclubs targeting the theft of mobile phones. The largest spike occurred when females aged 18-25 were the focus of these groups; these victims accounted for 80% of the thefts. Work has been undertaken in conjunction with the nightclubs and this likely to be responsible for the reduction in thefts seen in April.

Alcohol Misuse and Alcohol-related Disorder

- 3.8 Alcohol-related hospital admissions have been on an upwards trend since the beginning of 2010. Tackling alcohol misuse has been assigned priority status within the health services and a programme of focussed work to reduce unnecessary A&E attendance and admission rates related to alcohol continues to be developed.
- 3.9 The number of police recorded injury assaults has reduced by 17% in 2011/12 compared with 2010/11, well in excess of the 3% target. Funding has been continued in 2012/13 for the Safe Space and taxi marshal services which help to ensure the night-time economy runs safely.

- 3.10 Following the city's Big Alcohol Debate there are plans to present the findings on YouTube and other relevant websites. In response to the finding that people felt that alcohol was too easily available, work is taking place with local businesses to highlight the financial opportunities to be had through alternative events which are not driven by alcohol. Ways to encourage more responsible approaches to alcohol through off sales are being taken forward with licensees and the possibility of amending planning policies to tighten rules around off licensing is also being explored.

Anti-Social Behaviour

- 3.11 Between July 2011 and March 2012 13% of the 1,014 people surveyed on behalf of Sussex Police believed that one or more of 6 types of ASB (drug dealing/use; drunk/rowdy behaviour; vandalism/graffiti; litter/dog fouling; noisy neighbours; and teenagers hanging around) was a fairly big or very big problem. City-wide, out of these six areas litter/dog fouling was of most concern, with people being drunk or rowdy being perceived as the next problematic.
- 3.12 Brighton & Hove have accepted an invitation from the Home Office to be involved with 'piloting' a local approach to the Community Trigger which is part of the new tools and powers to tackle ASB being introduced in the coming months. The Community Trigger involves local partners in the Safe in the City Partnership, including the police and the council, being required to respond where there is a persistent anti-social behaviour issue which has been reported by a number of different households. This is one of the measures anticipated in the recent white paper on anti-social behaviour.

Domestic Violence

- 3.13 During 2011/12 45% of domestic violence crimes were solved. This is below the result of 49% during 2010/11. However, 78% of DV court cases in 2011/12 resulted in a conviction, compared with 67% in 2010/11.
- 3.14 In 2011/12, 270 referrals were made to Rise independent domestic violence advocacy (IDVA) service which provides support high risk victims to manage their risk. Of the 255 people engaging and receiving support, 79% reported reduced risk at the point when they left the IDVA service and 100% reported feeling safer. There were 286 referrals to the Rise Community Outreach and Family Service in 2011/12 of whom 254 engaged and received support, with a survey revealing a range of positive outcomes being reported by those supported.
- 3.15 Rise has achieved an excellent rating in the national domestic violence accreditation framework for their work with survivors and their families locally. Service outcomes for survivors include: increased awareness of domestic violence and its impact, partner agencies' ability to respond effectively; improved family relationships; increased confidence in disclosing domestic violence; and increased physical and emotional safety of survivors using the service.

Sexual Offences

- 3.16 The number of police recorded serious sexual offences in 2011/12 was 277, slightly fewer than the 285 recorded in 2010/11. In 2011/12, 21% of serious sexual offences

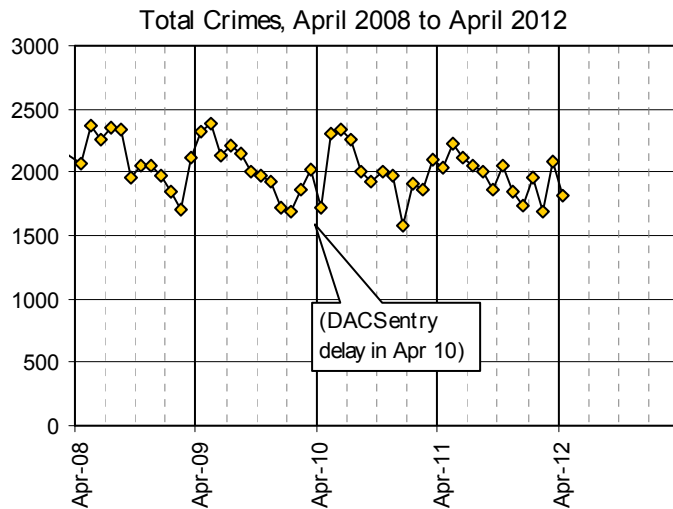
were detected by the police and 75% of finalised court cases for (all) sexual offences resulted in a conviction.

- 3.17 We continue to encourage the reporting of sexual crimes and incidents to the police when they happen so that steps can be taken to bring the perpetrator to justice and to prevent reoccurrence. This also leads to a pathway for victims to attend the Sexual Assault Referral Centre where they can receive support and be referred on to counselling and advocacy services provided by Survivors Network and other local agencies.

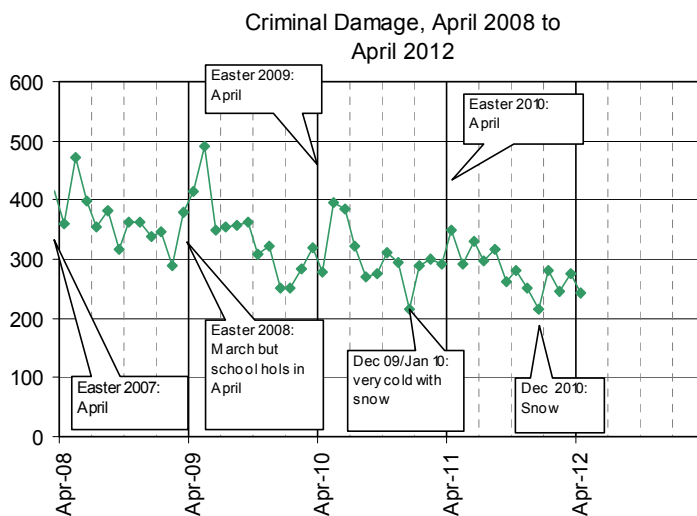
Hate Incidents and Crimes

- 3.18 In response to community concerns, a direct reporting telephone line (01273 292735) to simplify the process of reporting hate incidents to the Community Safety Casework Team was introduced in April 2012.
- 3.19 There is risk assessment process now in place to assess and manage risk and harm caused to victims of hate crime and anti-social behaviour who report to the police and a number of other agencies. There is a monthly Multi-Agency Risk Assessment Conference meeting which oversees and manages high risk cases in partnership.
- 3.20 The number of police-recorded **racist and religiously motivated incidents and crimes** have continued to decline in 2011/12 compared to 2010/11. The percentage of prosecutions resulting in a conviction continues its year on year rise and was 89% in 2011/12. The Racial Harassment Forum remains concerned about under-recording of hate incidents by the police on their IT and monitoring systems and the potential impact this may have on the strategic aim of encouraging people to report incidents when they happen, providing support to victims and reducing harm.
- 3.21 In 2011/12 there have been 63 **LGBT hate incidents and crimes** recorded by the police, 13% fewer than in 2010/11. In 2011/12 30 crimes have been detected or solved and 18 resulted in a charge being made. There were 25 prosecutions finalised at court and 21 of these resulted in a conviction (84%). A number of opportunities have been taken to engage with marginalised and vulnerable LGBT groups including International Day against Homophobia, Biphobia and Transphobia and the LGBT Health Day.
- 3.22 The police have recorded four **disability hate crimes** and one crime-related incident on the crime database during 2011/12. Once at court 5 out of the 7 cases which have been concluded in 2011/12 (71%) have resulted in a conviction. There have been 31 disability hate incidents reported to the Community Safety Casework Team in 2011/12. This remains on a par with last year, but it had been hoped that the number reported would increase in the light of work to publicise and encourage reporting. In response, further work has taken place or is planned to further increase the number of reporting centres and training for staff. There are new police disability liaison officers providing an improved link between the police and disabled people. This will be especially helpful for improving reporting from people with learning disabilities and other vulnerable clients.

Crime trends up to April 2012

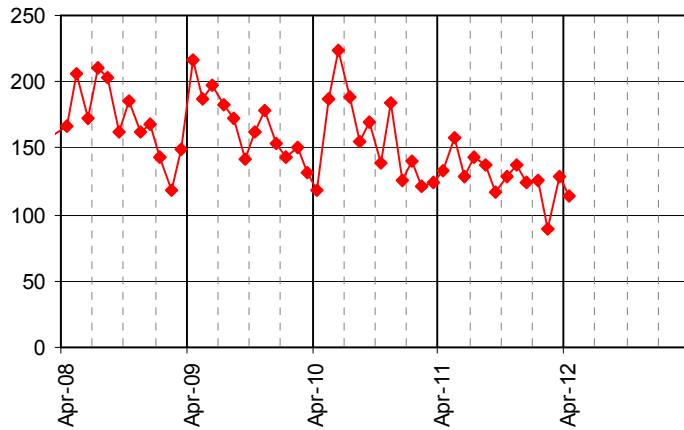


3.23 The number of total crimes shows a declining long term trend, although data since Jan 2012 have fluctuated more than usual. The peak in March 2011 and subsequent April drop has been influenced by a very high number of theft from person offences recorded in March.



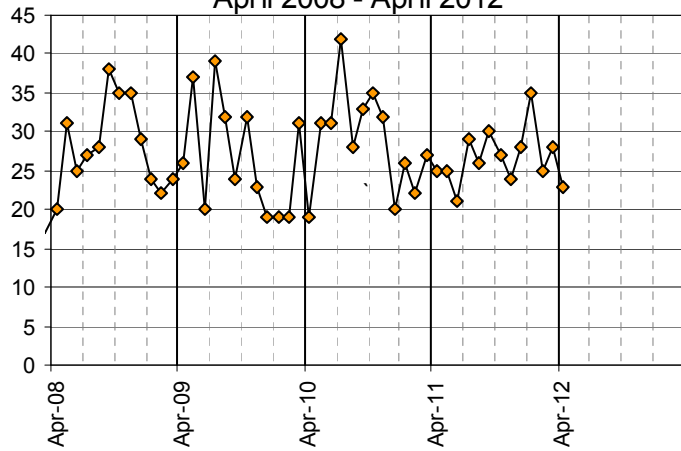
3.24 The long term downward trend in criminal damage continues.

All Injury Violence
April 2008 to April 2012



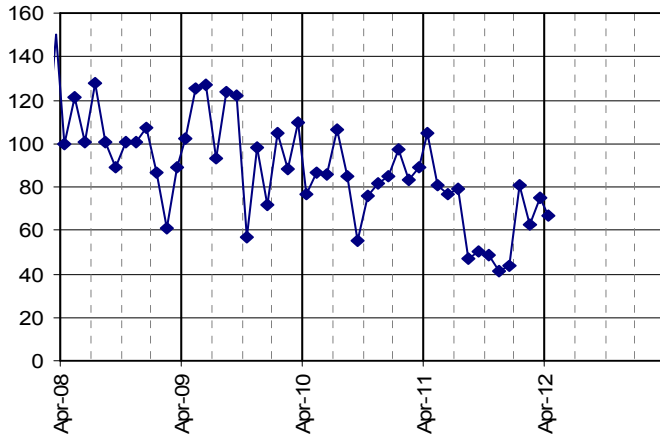
3.25 The declining trend in injury violence continues, and the number in February dropped below 90.

Sexual Offences
April 2008 - April 2012



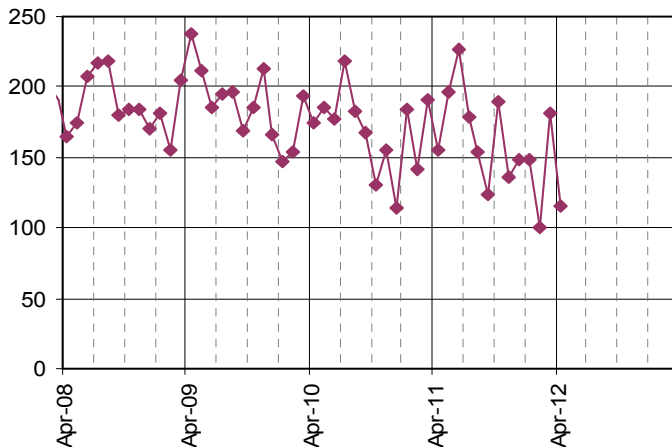
3.26 The number of police recorded sexual offences has remained between 20 and 35 per month. Work continues to encourage reporting of incidents.

Domestic Burglary, Apr 2008 to Apr 2012



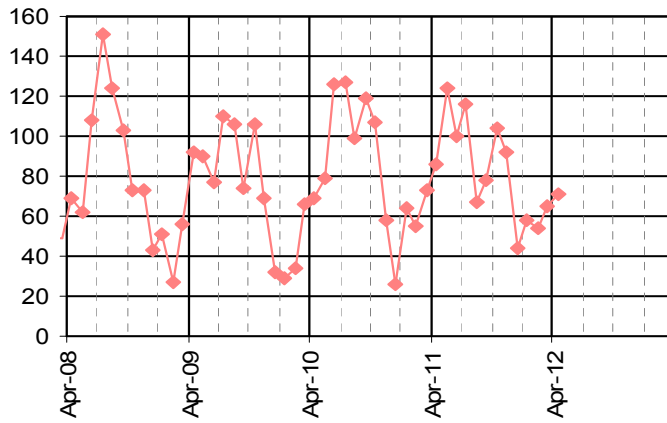
3.27 There has been a long term declining trend in domestic burglaries, with numbers between August and December 2011 being particularly low (40-50 crimes per month). From January onwards the number has risen again to between 60 and 80 per month.

Vehicle Crime, April 2008 to April 2012



3.28 Vehicle crimes have fluctuated over the past year, but the general trend is downwards. 100 crimes were recorded in February which is the lowest monthly number recorded for many years.

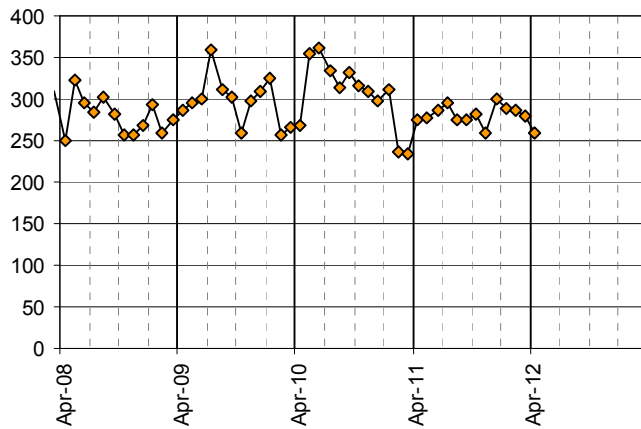
Theft of a Pedal Cycle,
April 2008 to April 2012



3.29 A seasonal pattern in cycle thefts continues and numbers would be expected to rise in the coming months as more people cycle.

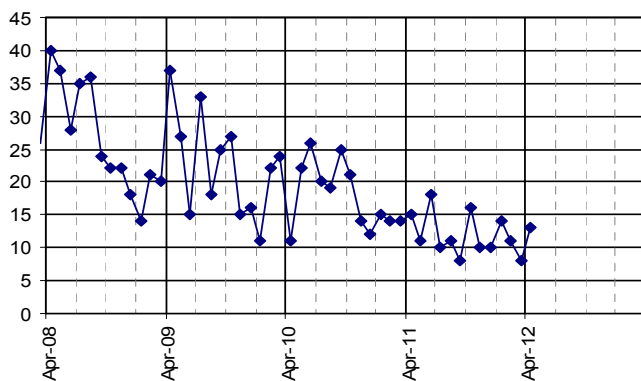
Police crime data presented in this report only reflect those crimes which are reported and recorded. There is likely to be a level of underreporting in many crime types. However, domestic violence and the hate crimes on this page may be particularly liable to underreporting.

Domestic Violence Crimes and Incidents,
April 2008 - April 2012



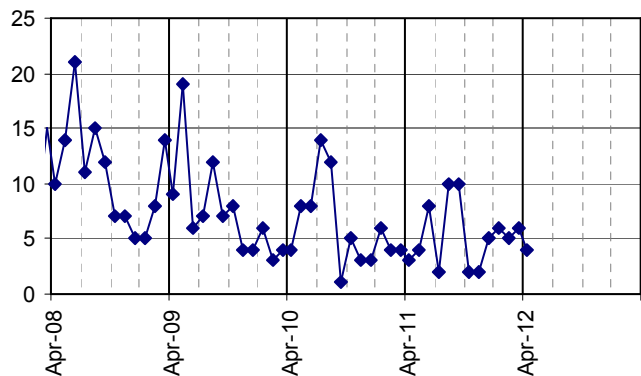
3.30 The number of domestic violence crimes and crime-related incidents recorded during 2011/12 has been between 250 and 300 each month.

Racist and Religiously Motivated Crimes and Incidents (police crime database),
April 2008 to April 2012



3.31 The declining trend in police recorded racist and religiously motivated incidents and crimes appears to be continuing. Recorded numbers have been between 8 and 18 per month since summer 2010.

LGBT Hate Crimes and crime-related Incidents
(police crime database),
Apr 2008 to April 2012



3.32 The number of police-recorded LGBT hate crimes and crime-related incidents and has remained at ten or below since summer 2010. Aug and Sept saw the highest number (ten) over this period.

Performance data for key crime types, 2011/12

Police recorded crimes	number of crimes Apr 10 – Mar 11	number of crimes Apr 11 – Mar 12	reduction target (from 2010/11 baseline)	performance against target to date		rank within 15 benchmarked CSPs ¹
Total Crimes	24052	23668	-3%		not on target	6
Criminal Damage	3629	23398	-5%	on target		14
Injury Violence	1880	1552	-3%	on target		8
Sexual Offences	346	323	-	-		n/a ²
Domestic Burglary	1008	793	-	-		2
Theft from/of a Motor Vehicle	2022	1937	-	-		4
Pedal Cycle Theft	1003	988	-	-		6
Domestic Violence Crimes and Incidents	3672	3385	-	-		n/a
Racist/Religiously motivated Crimes and Incidents	215	142	-	-		n/a
LGBT Hate Crimes and Incidents	72	63	-	-		n/a
Disability Hate Crimes and Incidents	2	5	-	-		n/a

¹ Brighton & Hove is matched for comparative purposes with 14 other Community Safety Partnerships (CSPs) according to a range of socio-demographic and geographic variables. A rank of 1 is the best; 15 is the worst; 8 is the middle position.

² Because sexual offences, DV and hate crimes are subject to underreporting and local work is being undertaken to increase reporting of these crimes, it is not appropriate to judge performance in comparison with other Community Safety Partnerships based on the number of police recorded crimes.

Community Safety Forum

Agenda Item 8a

Brighton & Hove City Council

--	--	--	--	--	--

